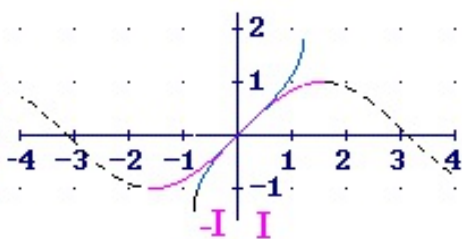


Restrict the domain to take an inverse trig function.

$\arcsin(+)$  → I

$\arcsin(0)$  → 0

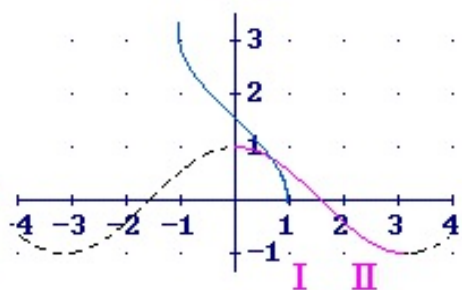
$\arcsin(-)$  → -I



$\arccos(+)$  → I

$\arccos(0)$  →  $\pi/2$

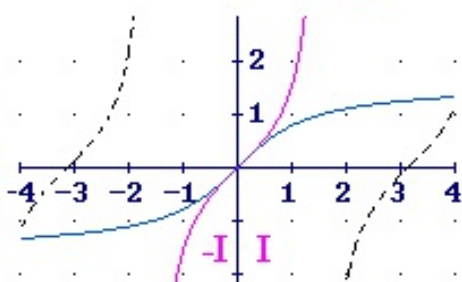
$\arccos(-)$  → II



$\arctan(+)$  → I

$\arctan(0)$  → 0

$\arctan(-)$  → -I



Arc function results

$\sin^{-1}(x)$

$\cos^{-1}(x)$

$\tan^{-1}(x)$

