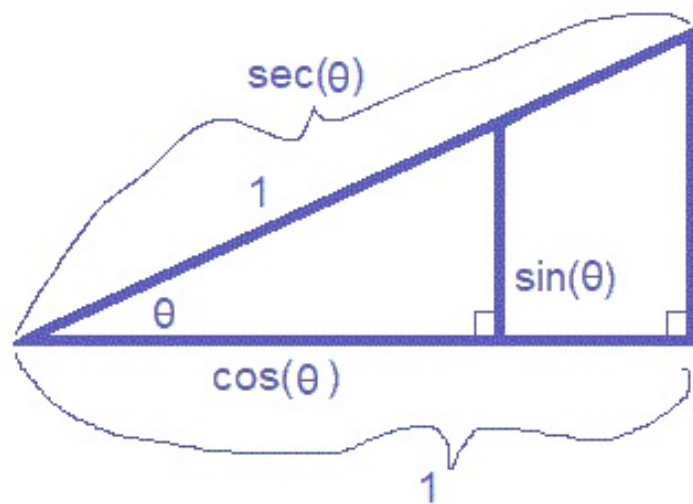
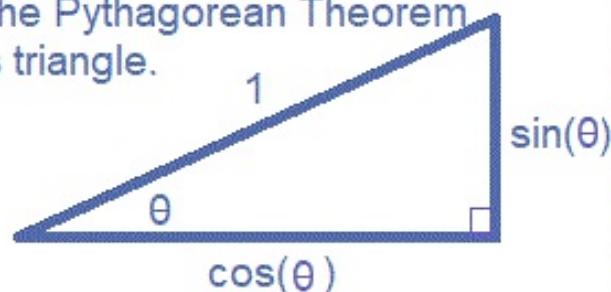
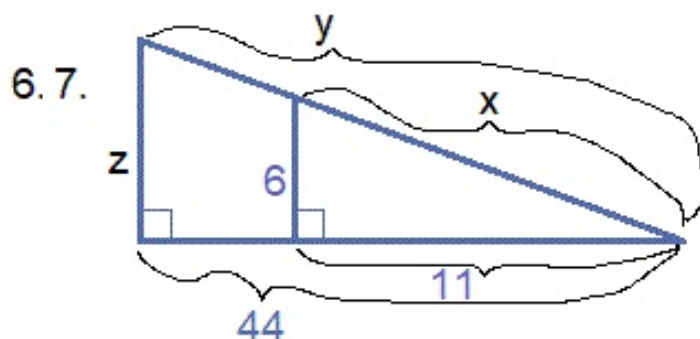
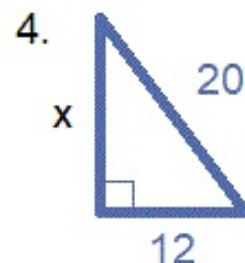


Find the missing side or angle. Write answer in simplest radical form.



10. Using the small and large triangles at the left, write a proportion like:

$$\frac{\text{vertical leg}}{\text{horizontal leg}} = \frac{\square}{\square} = \frac{\square}{\square}$$

 $\tan(\theta)$

11. Use #10 to solve for $\tan(\theta)$.